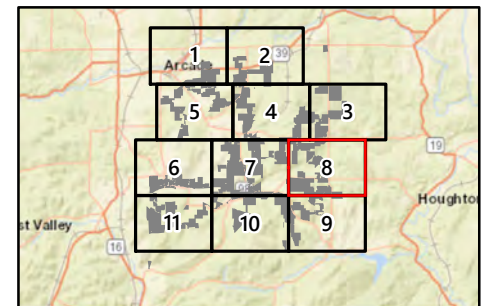


### Alle-Catt Wind Farm

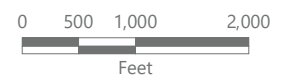
Towns of Arcade, Centerville, Farmersville, Freedom, and Rushford Allegany, Cattaraugus, and Wyoming Counties, New York

**Certificate Amendment**  
**Case No. 17-F-0282**

- WTG Setback
- Town Boundary
- WTG
- Collection Line
- Access Road
- ADLS Pad
- Facility Site (See Note 1)



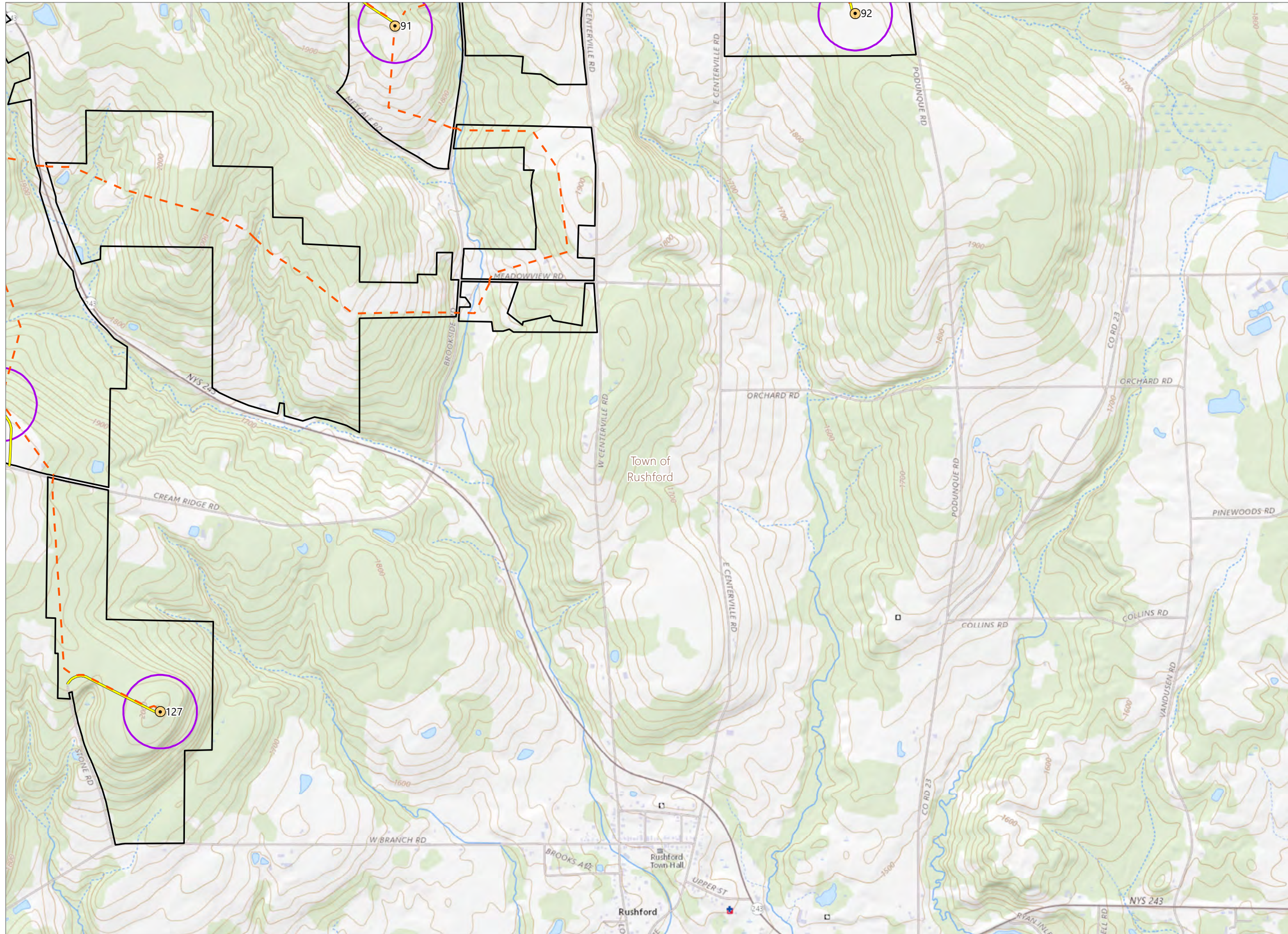
Sheet 9 of 13



Prepared January 23, 2023  
Setback circles shown are based on the local laws in effect in each town. For towns without wind laws, circles are shown for ACWE's recommended setback of 1.1 x tip height.  
(1) Facility Site Boundary based on County GIS dataset.  
Basemap: Esri "USGS Topo" map service









Figure 5: Updated Figure 6-1. Wind Turbine Setbacks

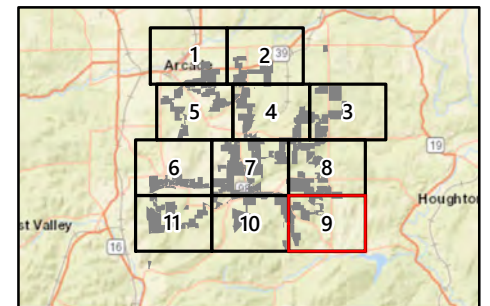


### Alle-Catt Wind Farm

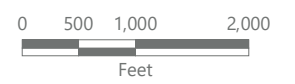
Towns of Arcade, Centerville, Farmersville, Freedom, and Rushford  
Allegany, Cattaraugus, and Wyoming  
Counties, New York

**Certificate Amendment**  
**Case No. 17-F-0282**

-  WTG Setback
-  Town Boundary
-  WTG
-  Collection Line
-  Access Road
-  Facility Site (See Note 1)

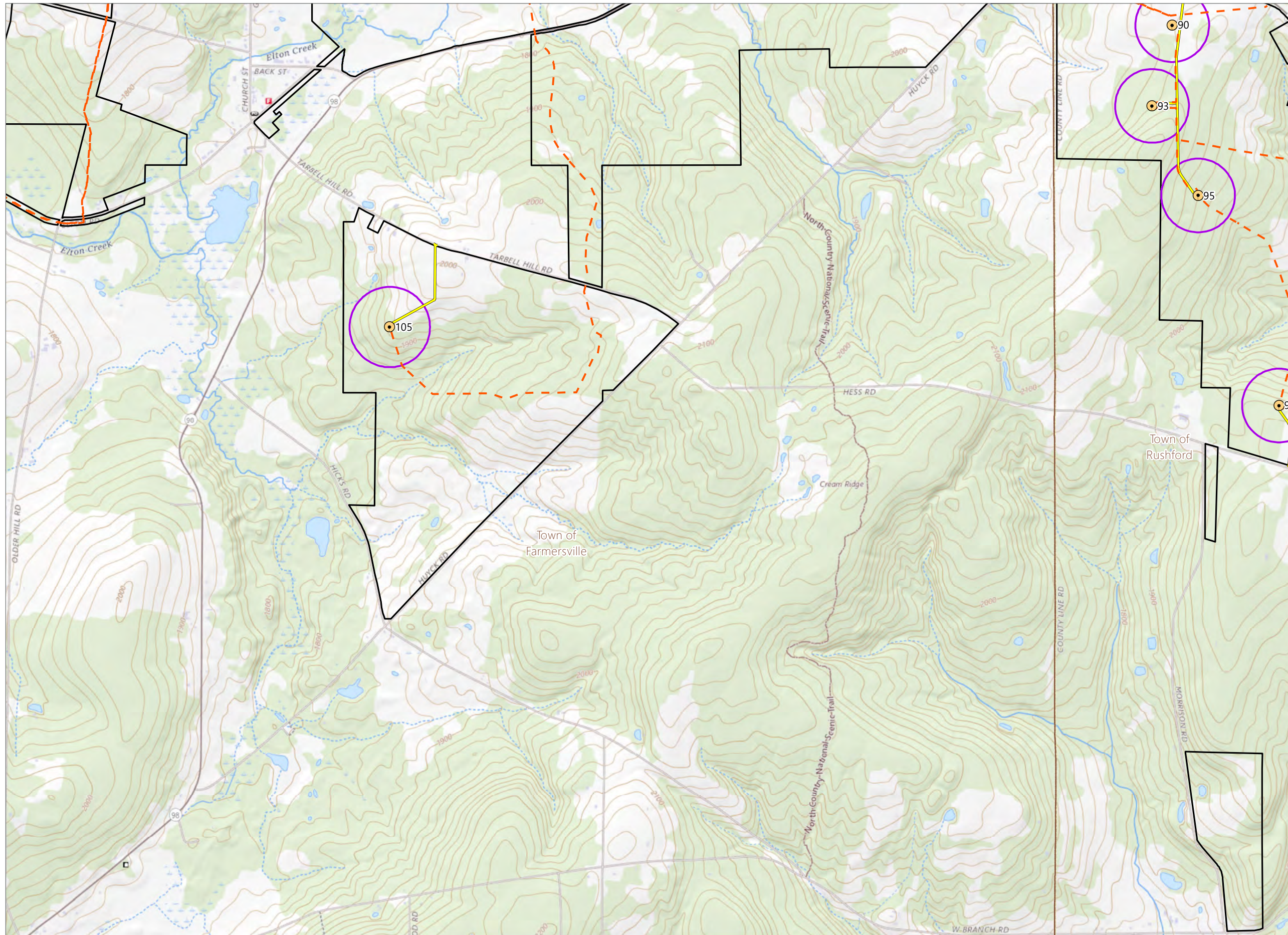


Sheet 10 of 13



Prepared January 23, 2023  
Setback circles shown are based on the local laws in effect in each town. For towns without wind laws, circles are shown for ACWE's recommended setback of 1.1 x tip height.  
(1) Facility Site Boundary based on County GIS dataset.  
Basemap: Esri "USGS Topo" map service









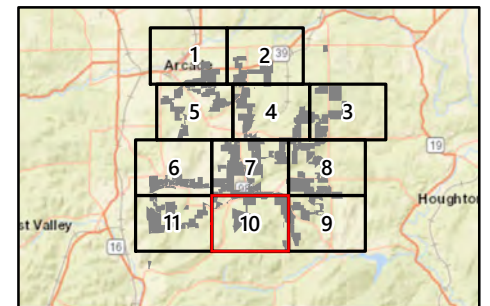


### Alle-Catt Wind Farm

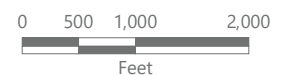
Towns of Arcade, Centerville, Farmersville, Freedom, and Rushford  
Allegany, Cattaraugus, and Wyoming  
Counties, New York

**Certificate Amendment  
Case No. 17-F-0282**

-  WTG Setback
-  Town Boundary
-  WTG
-  Collection Line
-  Access Road
-  Facility Site (See Note 1)

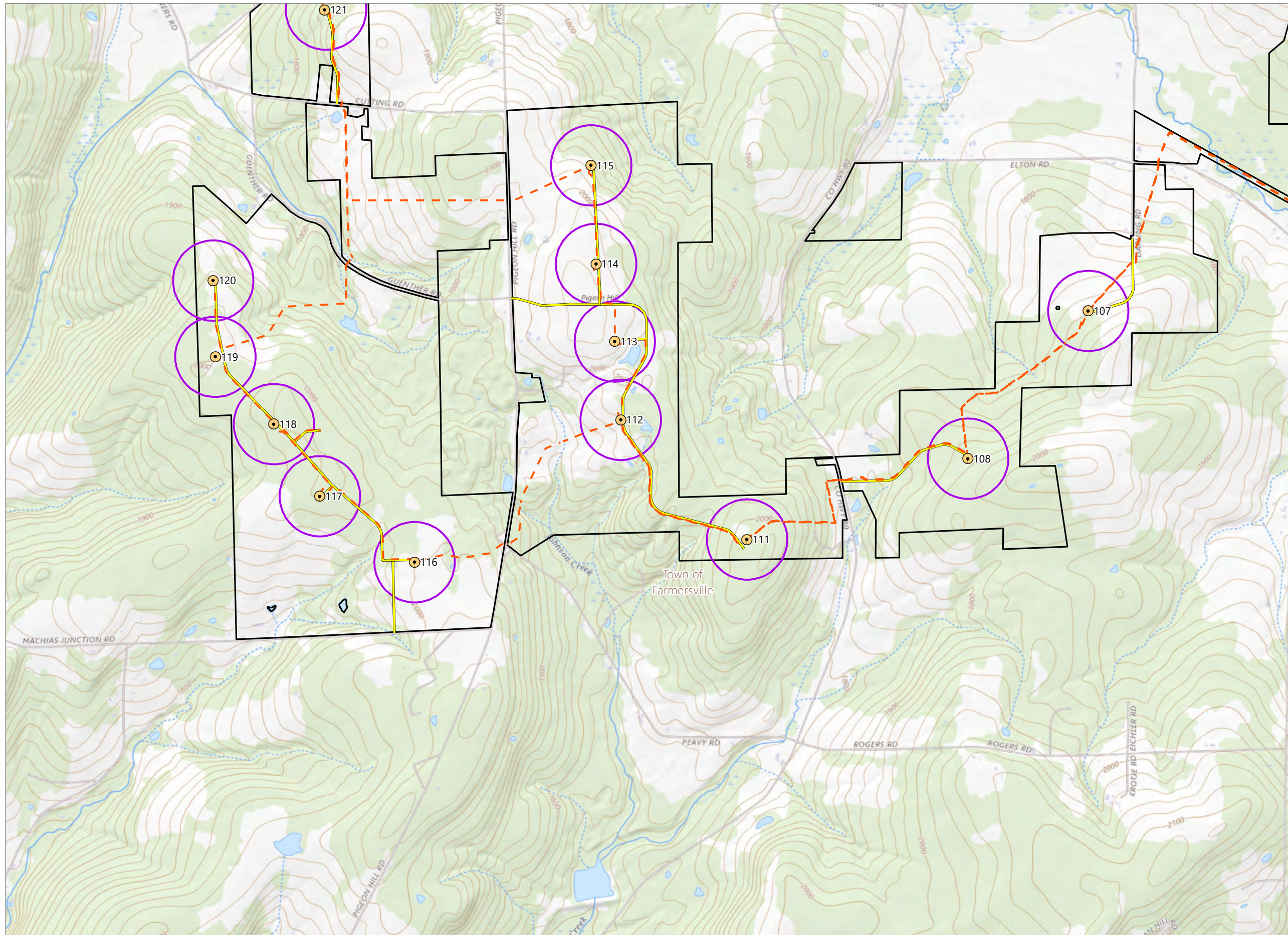


Sheet 11 of 13



Prepared January 23, 2023  
Setback circles shown are based on the local laws in effect in each town. For towns without wind laws, circles are shown for ACWE's recommended setback of 1.1 x tip height.  
(1) Facility Site Boundary based on County GIS dataset.  
Basemap: Esri "USGS Topo" map service



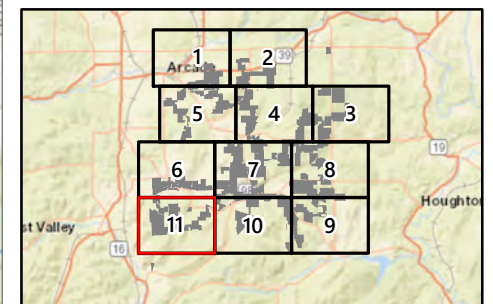


### Alle-Catt Wind Farm

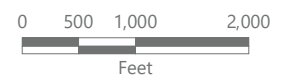
Towns of Arcade, Centerville, Farmersville, Freedom, and Rushford  
Allegany, Cattaraugus, and Wyoming  
Counties, New York

**Certificate Amendment**  
**Case No. 17-F-0282**

- WTG Setback
- Town Boundary
- WTG
- Collection Line
- Access Road
- ADLS Pad
- Facility Site (See Note 1)



Sheet 12 of 13

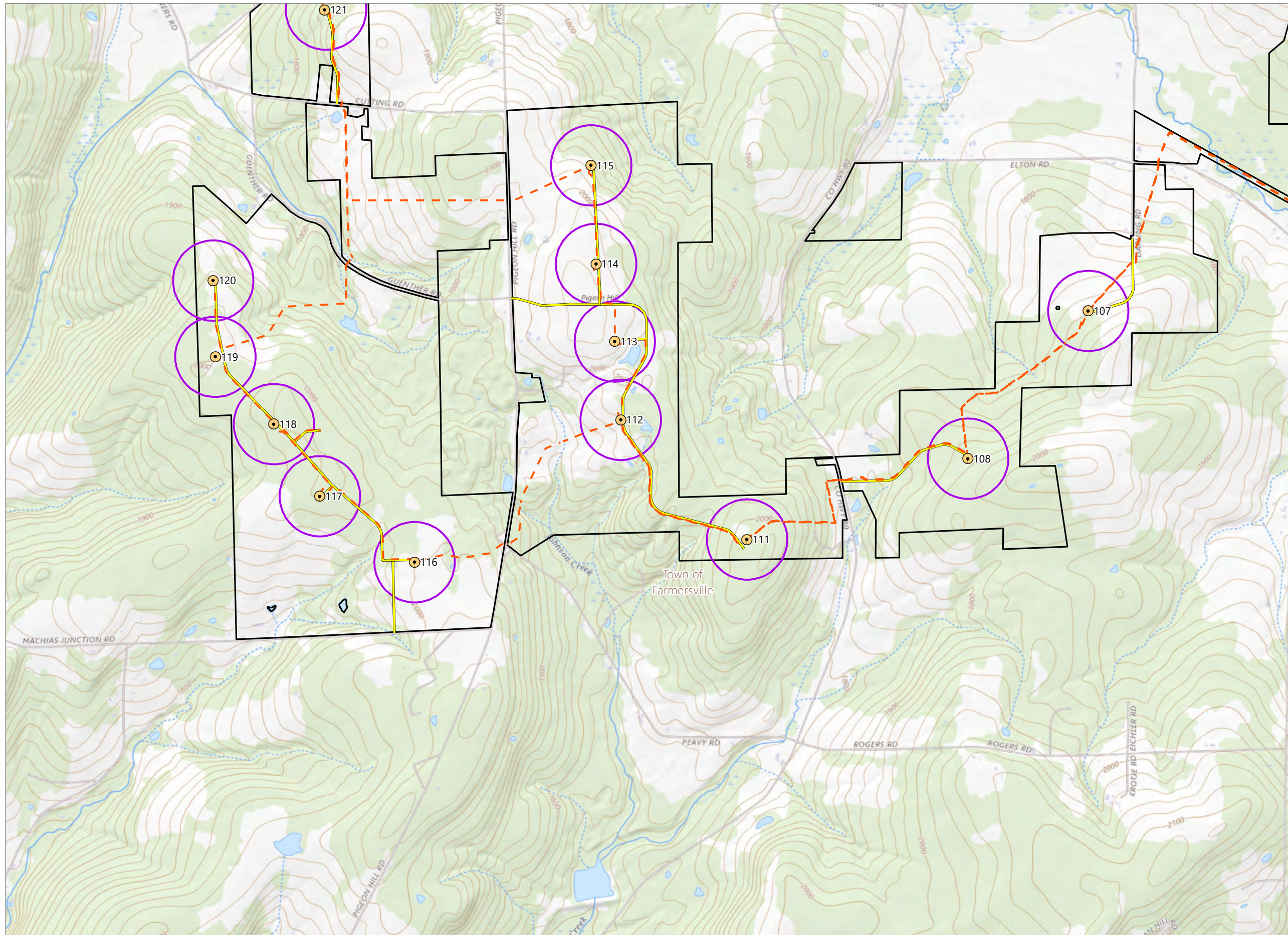


Prepared January 23, 2023

Setback circles shown are based on the local laws in effect in each town. For towns without wind laws, circles are shown for ACWE's recommended setback of 1.1 x tip height.

(1) Facility Site Boundary based on County GIS dataset.  
Basemap: Esri "USGS Topo" map service



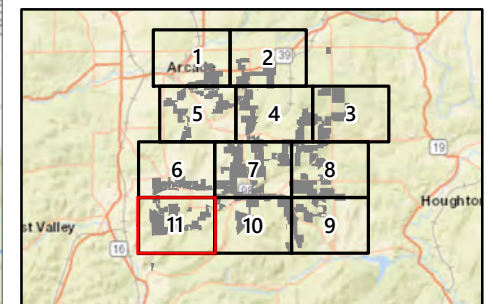


### Alle-Catt Wind Farm

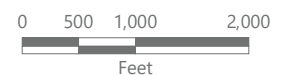
Towns of Arcade, Centerville, Farmersville, Freedom, and Rushford  
Allegany, Cattaraugus, and Wyoming  
Counties, New York

**Certificate Amendment**  
**Case No. 17-F-0282**

- WTG Setback
- Town Boundary
- WTG
- Collection Line
- Access Road
- ADLS Pad
- Facility Site (See Note 1)



Sheet 13 of 13



Prepared January 23, 2023

Setback circles shown are based on the local laws in effect in each town. For towns without wind laws, circles are shown for ACWE's recommended setback of 1.1 x tip height.

(1) Facility Site Boundary based on County GIS dataset.  
Basemap: Esri "USGS Topo" map service